



\$ 2,080,000



5009 Poola St, Honolulu , HI 96821

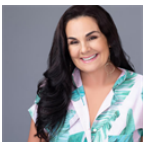
- » Beds: 3 | Baths: 2 Full
- » MLS #: 202309190
- » Single Family
- » More Info: pumehanahale.com



Sherine Duncan
 Joel Cavasso
 (808) 554-2262
Sherine@hawaiiluxhomes.com



eXp Realty
 500 Ala Moana Blvd - Suite 400
 Honolulu, HI 96813
 (808) 554-2262



Cindy Eastman
 (808) 221-1992
Cindy@HawaiiLuxHomes.com

Fresh, clean and beautifully remodeled in 2020! You won't want to miss this three bedroom two bath home with additi family room, and garage. 10,000 Square foot lot is fully fenced and landscaped with a peak to the ocean from the expa deck. The open floor plan and vaulted ceilings make the home feel extra spacious and give ample natural lighting. Luxi flooring throughout, and a gorgeous remodeled kitchen with island, double ovens and built-in cooktop. Split AC's in ea leased PV panels. Owner has meticulously maintained this sweet hale. The location is incredibly convenient as it sits in neighborhood of Waialae Iki which is in between Kahala and Aina Haina. Quick and easy drives to town, Waikiki, Hawa many great schools, shopping and restaurants. Come see and come home!

